

File: Wells

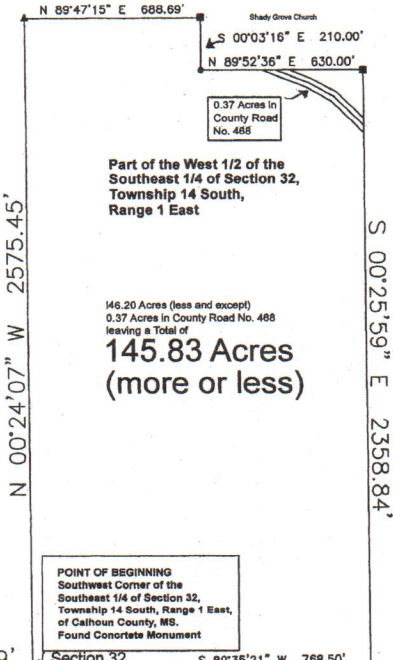
Surveyed By:  
Paul M. (Chip) Moore III  
Moore's Surveying  
P.O. Box 230  
Calhoun City, MS 38916  
Office: (662)828-5063  
Cell: (662)983-8591

Survey Requested By:  
Mark Lewis  
418-4422

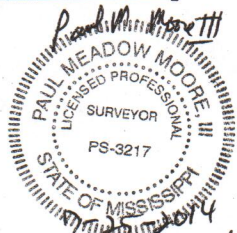
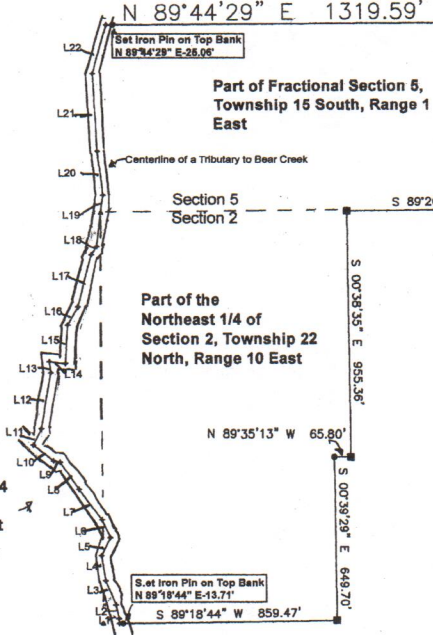
# A Survey of 146.20 Acres (less and except), 0.37 Acres in County Road No.468 leaving a Total of 145.83 Acres (more or less), located partly in the West 1/2 of the Southeast 1/4 of Section 32, Township 14 South, Range 1 East, and partly in Fractional Section 5, Township 15 South, Range 1 East, and partly in the Northeast 1/4 and the Northwest 1/4 of Section 2, Township 22 North, Range 10 East, all in Calhoun County, Mississippi.

A Survey of 146.20 Acres (less and except), 0.37 Acres in County Road No.468 leaving a Total of 145.83 Acres (more or less), located partly in the West 1/2 of the Southeast 1/4 of Section 32, Township 14 South, Range 1 East, and partly in Fractional Section 5, Township 15 South, Range 1 East, and partly in the Northeast 1/4 and the Northwest 1/4 of Section 2, Township 22 North, Range 10 East, all in Calhoun County, Mississippi.

Beginning at a Found Concrete Monument at the Southwest Corner of the Southeast 1/4 of Section 32, Township 14 South, Range 1 East of Calhoun County, Mississippi, which is the POINT OF BEGINNING; thence from said POINT OF BEGINNING go N 00°24'07" W-2575.45' to a Found Iron Pin; thence go N 89°47'15" E-688.69' to a Found Concrete Monument; thence go S 00°03'16" E-210.00' to a Set Iron Pin; thence go N 89°52'36" E-630.00' to a Found Concrete Monument; thence go S 89°35'21" W-768.50' to a Found Concrete Monument; thence go S 89°35'13" W-65.80' to a Set Iron Pin; thence go S 00°39'29" E-649.70' to a Found Concrete Monument; thence go S 89°18'44" W-859.47' to a point in the center of a tributary creek to Bear Creek (Set Iron Pin N 89°18'44" E-13.71' on top bank); thence along the center of said tributary creek to Bear Creek go as follows: N 06°44'29" W-19.20' to a point; thence go N 12°19'01" W-55.45' to a point; thence go N 21°53'58" W-104.96' to a point, thence go N 08°46'08" W-100.89' to a point; thence go N 24°34'33" E-80.01' to a point; thence go N 37°16'53" W-151.12' to a point; thence go N 33°58'12" W-128.77' to a point; thence go N 77°56'52" W-25.67' to a point; thence go N 52°17'18" W-98.57' to a point; thence go N 26°13'37" E-89.35' to a point; thence go N 10°19'30" E-218.18' to a point; thence go N 07°07'24" W-43.73' to a point; thence go S 83°10'27" E-62.68' to a point; thence go N 04°04'44" E-149.16' to a point; thence go N 30°08'40" E-80.96' to a point; thence go N 14°42'22" E-207.45' to a point; thence go N 33°03'50" E-40.92' to a point; thence go N 07°04'05" E-206.87' to a point; thence go N 06°44'46" W-184.56' to a point; thence go N 03°41'04" W-310.10' to a point; thence go N 15°57'48" E-202.89' to a point (Set Iron Pin N 89°44'29" E-25.06' on top bank of creek); thence leaving said centerline of a tributary creek to Bear Creek go N 89°44'29" E-1319.59' to a Found Concrete Monument and back to the POINT OF BEGINNING.



L1	N	05°44'29"	W	19.20'
L2	N	12°18'01"	W	55.45'
L3	N	21°53'58"	W	104.96'
L4	N	08°46'08"	W	100.89'
L5	N	24°34'33"	E	80.01'
L6	N	37°16'53"	W	77.72'
L7	N	37°16'53"	W	151.12'
L8	N	33°58'12"	W	128.77'
L9	N	77°56'52"	W	25.67'
L10	N	52°17'18"	W	98.57'
L11	N	26°13'37"	E	89.35'
L12	N	10°18'30"	E	218.18'
L13	N	07°07'24"	W	43.73'
L14	S	83°10'27"	E	62.68'
L15	N	04°04'44"	E	149.16'
L16	N	30°08'40"	E	80.96'
L17	N	14°42'22"	E	207.45'
L18	N	33°03'50"	E	40.92'
L19	N	07°04'05"	E	206.87'
L20	N	06°44'46"	W	184.56'
L21	N	03°41'04"	W	310.10'
L22	N	15°57'48"	E	202.89'



Scale 1"=450'  
June 23, 24, 25, 26, 27  
July 22, 23, 24, 25, 2014  
Class "D" Survey  
Solar Obs'd  
Found Concrete Monument- ■  
Set Iron Pin (1/2"x18") typical- ●  
Deed Ref: 92/552  
114/263  
123/006  
92/385  
81/37  
82/395  
119/68  
Inst. No. 2010002441  
2008001174  
2011002739  
2011000441  
2013002017

*Reduced Scale*